

**CANVA**dental

# REFINE CATALOG



Discover a treasure trove of top-tier dental products that redefine quality and value - CANVA DENTAL, your smile's best companion.

## OUR PRODUCTS



Ultrasonic Scalers



Curing Lights



Dental Imaging



Endo Filling & Obturation



Endo & Root Canal



Multiple Dental Device



Built In Ultrasonic Scalers



### MaxPiezo1 Ultrasonic Scaler

Power Input: 220VAC 50Hz, 110VAC 60Hz  
Main Unit Input: 24VAC 50Hz 1.3A  
Frequency: 30kHz±3kHz  
Water Pressure: 0.1 bar-5bar (0.01MPa-0.5MPa)



Rs  
23800

### MaxPiezo3 Ultrasonic Scaler

Power Input: 220VAC 50Hz, 110VAC 60Hz  
Input Power: 38VA  
Frequency: 28kHz± 3kHz  
Water Pressure: 0.1bar-5bar(0.01MPa-0.5MPa)



Rs  
30000

### MaxPiezo6 Ultrasonic Scaler

Power Input: 220VAC 50Hz, 110VAC 60Hz  
Main Unit Input: 24VAC 50Hz 1.3A  
Frequency: 28kHz±3kHz  
Water Pressure: 0.1bar-5bar(0.01MPa-0.5MPa)



Rs  
40000

### MaxPiezo7 Ultrasonic Scaler

Power input: 220VAC 50Hz 110VAC 60Hz  
Frequency: 28kHz±5kHz  
Water pressure: 0.1bar-5bar(0.01MPa-0.5MPa)



Rs  
50000

### DS7+ Ultrasonic Dental Scaler

Power output: DC 15V/1.6A  
Battery: 1900mAh  
Frequency: 28kHz±3kHz  
Water Pressure: 0.1bar-5bar(0.01MPa-0.5MPa)



Rs  
60000

## Swan+ Dental Curing Light

Wavelength: 385nm-515nm

Light intensity: 1000mW/cm<sup>2</sup> -2500mW/cm<sup>2</sup>

Battery: 3.6V/2600mAh

Rs  
75000



## Swan Dental Curing Light

Wavelength: 385nm-515nm

Light intensity: 900mW/cm<sup>2</sup>-2500mW/cm<sup>2</sup>

Battery: 3.6V/2600mAh

Rs  
62000



## A-Cure Plus Dental Curing Light

Wave Length: 385nm-515nm

Light Intensity: 1000mW/cm<sup>2</sup>- 2500mW/cm<sup>2</sup>

Battery Voltage and Capacity: 3.7V/1900mAh

Rs  
40000



## A-Cure Dental Curing Light

Wave length : 385nm-515nm

Light intensity: 800mW/cm<sup>2</sup> -1800mW/cm<sup>2</sup>

Battery: 3.7V/1900mAh

Rs  
37000



## MaxCure9 Dental Curing Light

Wave length: 385nm-515nm

Light intensity: 1000mW/cm<sup>2</sup>- 2500mW/cm<sup>2</sup>

Battery: 2600mA

Rs  
25000



## MaxCure5 Dental Curing Light

Wave Length: 420 nm-480 nm  
Light intensity: 1000mW/cm<sup>2</sup> – 1800mW/cm<sup>2</sup>  
Battery Voltage and Capacity: 3.6V/2600mAh

Rs  
18000



## MaxCure3 New Dental Curing Light

Wave Length: 430 nm-480 nm  
Light Intensity: 1600-1800mW/cm<sup>2</sup>  
Battery: 800 mA

Rs  
13000



## MaxCure3 Dental Curing Light

Wave Length: 430 nm-480 nm  
Light Intensity: 1000-1200mW/cm<sup>2</sup>  
Battery: 800 mA

Rs  
11000



## Built-in

## MaxCureG Dental Curing Light

Wave Length: 385nm-515nm  
Light Intensity: 1000m/cm<sup>2</sup> –2500mW//cm<sup>2</sup>

Rs  
15000



## MaxCureH Dental Curing Light

Wave Length: 420nm-480nm  
Light Intensity: 1000m/cm<sup>2</sup> – 1800mW/cm<sup>2</sup>

Rs  
15000



# Digital Sensor RVG

## R1

25.4\*36.8\*4.4mm  
True Resolution: 20lp/mm  
Durable and reliable 80000+ bending tests

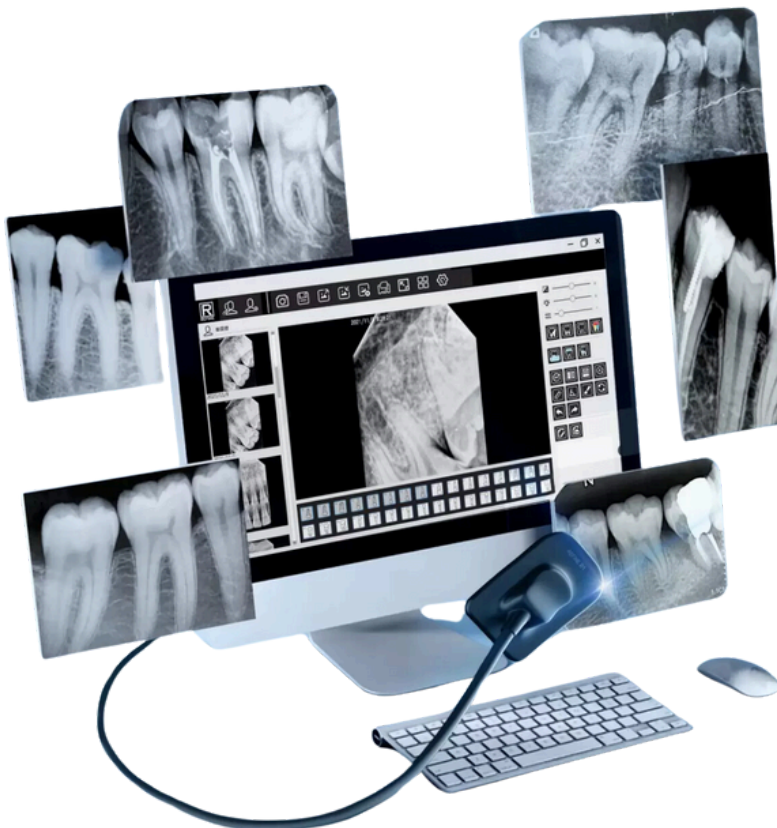
**Rs  
185000**



## R2

30.4\*41.9\*4.4mm  
True Resolution: 20lp/mm  
Durable and reliable 80000+ bending tests

**Rs  
205000**



# X-Ray Unit

## VeRay

Tube Current: 2mA  
Exposure Time: 0.01-2s  
Focus: 0.4mm  
Anode Target Angle: 12°  
Total Filtration: 1.0mmAl  
Battery Capacity: 950mAh

Rs  
225000



## REFINE X-Ray GT-1 (New launch)

Rs  
255000





# Refine Portable X-Ray GT-1 Uncover, Discover, Recover



Compact and Light  
1.8KG Only



Exposure Trigger  
Easy Single-handed  
Operation



Type C Connection,  
Super-fast Charging



Inclined touch panel



Ergonomic Design  
Non-slip Grip

# Intelligent Real-time Angulation System Enables More Accurate Images



Safety Lock Mode  
Prevent Unexpected Exposure



7 Default Tooth Positions  
with Preset Exposure Doses



Preset Parameter  
Adult and Children Modes



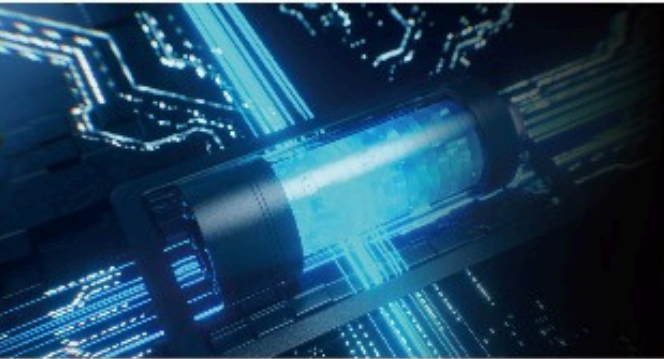
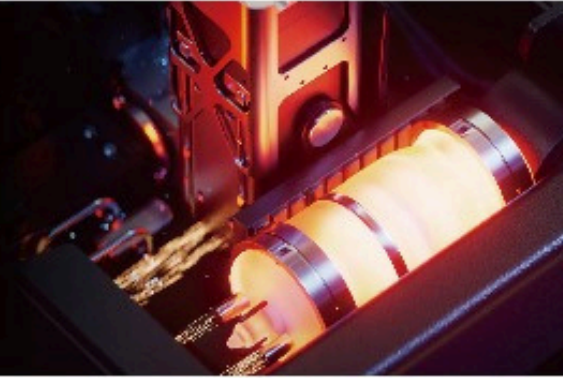
2500mAh High Capacity  
Lithium Battery



Real-time Angulation Display

## High Frequency but Low Radiation

Patented X-ray Tube Tech & Double Lead Coating Process  
Ensure high and stable X-ray output and shorter exposure while  
guaranteeing safety



## 2500mAh Lithium Battery High Capacity Provides Longer Endurance

400+ dental films can be taken on one full charge

## 0.4mm Focal Spot Ensures High-Definition Images

Provide clearer dental films with details for various needs



## Your trusted Aid in Diagnosis

Easy-to-use, fine imaging and quick exposure  
Your reliable and solid choice



# VeRay (New Upgrade)

Tube Current: 2mA

Exposure Time: 0.01-2s

Focus: 0.4mm

Anode Target Angle: 12°

Tube Voltage: 60KV

Highest Voltage: 70KV

Total Filtration: 1.0mmAl

Battery Capacity: 950mAh

Rs  
235000



## Root Canal Apex Locator A7

Measurement Voltage: AC 200mV

Measurement Current: AC 100uA

Dimensions: L130mm x W112mm x H23.5mm

Weight (Including Battery): 370gms

Rs  
45000



# IMotor Endo Dental Motor

- 360°rotatablecontraangle16 : 1handpiece
- Adaptedtoallmain file systemsinthemarket
- In-built 12 main file systmes
- Auto reverse function
- 10 customizedprograms

Rs  
91000



# VAT-3 Endo Ultrasonic Activator

## Basic technical parameters

- Dimension : 165mm x 28mm
- Power adapter input: AC 100-240V, 50/60 Hz 0.4A
- Power adapter output: DC5V/1A
- Main unit input: DC5 V/1A ( Charging State)
- Battery : 1900mAh
- Charge time: About 4 hours
- Power gear: 2 gears
- Tip vibration frequency: 45 kHz  $\pm$  5kHz  
Tip main amplitude offset : <200um

Rs  
38000



# Activa S Ultrasonic Air Scaling Activator

Inlet Air Pressure: 250 – 400kPa ( 2.5 – 4 bar)

Inlet Water Pressure: 100-200 kPa ( 1.0-2.0 bar)

Vibration Frequency: 5 – 6 KHz

Air flow volume: 25-35min

Water Flow Volume: 20-50 ml/min

Noise: <80db

Operating Conitions: 10°C –Aa 40°C

Relative Humidity: 30% – 75%

Air Pressure: 500hPa -1060hPa

Rs  
28000



## Gutta Percha Obturation Pen

Battery Capacity: 1900mAh

Classification: Class II (AC/DC power adapter)

Optional Preset Temperature: 150°C, 180°C, 200°C, 230°C

Rs  
80000



## Gutta Percha Obturation Gun

Battery Capacity: 1900mAh

Classification: Class II (AC/DC power adapter)

Optional Preset Temperature: 150°C, 180°C, 200°C, 230°C

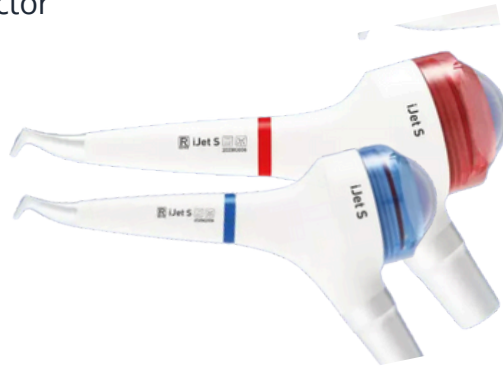
Rs  
90000



# Dental Prophy Jet Air Polisher

## iJet

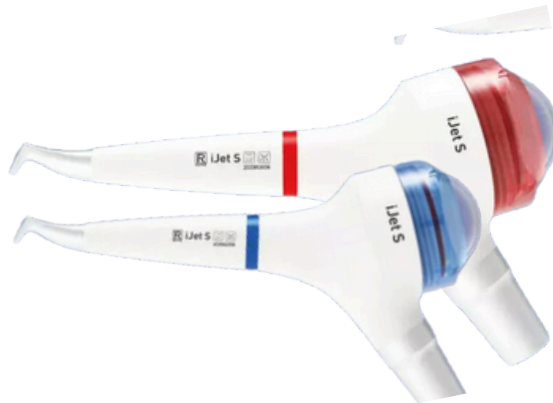
- Equipped with QC J1 supragingival sandblasting handpiece
- 4-holes connector



Rs  
42000

## iJet S

- Equipped with QC J1 supragingival sandblasting handpiece
- KAVO MULTIflex quick connector



Rs  
47000

## iJet 2S

- 2 sandblasting modes adjustable: G & P
- Equipped with 2 sandblasting handpiece QC J2 (supragingival) & QC J1 (periodontal)
- KAVO MULTIflex quick connector



Rs  
60000

## PT7 Periodontal Treatment Device

Tips Hardness: 30 HRC  
Vibration Amplitude: 1-200 $\mu$ m  
Treatment Depth: 14mm  
Power Input: 38VA  
Frequency: 28kHz-42kHz  
Water Pressure: 0.01MPa-0.5MPa (0.1bar-5bar)

Rs  
110000



## APT Dental Treatment Scaler

Battery Capacity: 1900mAh  
Classification: Class II (AC/DC power adapter)  
Optional Preset Temperature: 150°C, 180°C, 200°C, 230°C

Rs  
265000





# PTX Periodontal Treatment Scaler Polisher

- Scaling, Perio & Endo function & Air polish & clean
- Automatic mode identification and switching
- Intelligent water-temperature-control system
- Smart LCD touch control system
- High precision designed handpiece, portable and comfortable
- Funnel-shaped powder chamber, uniform spray pattern
- Adopting high-performance clog-free system
- Wireless multifunctional pedal
- Two dental scaler handpiece and two air polishing handpiece

Rs  
50000



## Refine MaxSurgery III

- Mechanical Size: 290mm\*270mm\*125mm
- Main Unit Weight: 3kg
- Power Input: 100-240Va.c.50Hz/60Hz
- Main Unit Input: 120VA
- Frequency: 24kHz~29.5kHz
- Water Flow Rate: 30~125ml/m
- Operating Model: B,P,E,C
- Control Model: Touch Control
- Tips: 14 tips, US1\*2、US2\*4、US4\*2、US5\*2、UL3\*2、UC1\*2

**Rs  
620000**



## If You Want To Contact Us...

✉ [contact@www.canvadental.com](mailto:contact@www.canvadental.com)

**CANVA**dental

[www.canvadental.com](http://www.canvadental.com)

To our sales points you can reach us from our website.



### Bahawlpur Office

#### Canva Dental Office

Civil Hospital Road, Ahmadpur East  
Tel : (0306) 1952075

## If You Want To Follow Us

 /Canva Dental

 /Canva Dental

 /Canva-dental



## This Part Is Important!

Product images, descriptions, packaging, prices in this catalog CANVA DENTAL is not responsible. In such cases, CANVA DENTAL records are valid. Pictures in the catalog are for informational purposes only. The packaging and design of the products may change over time. Therefore, the pictures are not binding.